

PLOW BLADE



BOROX

IN THE FRONT LINE



What do you need?

Contact us - we produce according to your needs!

Plow blades for all surfaces!

This brochure contains a selection of our products. If you cannot find what you need, please contact our sales department and we will tailor make a solution for you.

Most of the BOROX® winter blades are based on the Scandinavian system: mounting with wedge/wedge bolt and adaptor plate.

With a small contact surface and a correct angle you can increase the durability and the fuel consumption. Thanks to the adaptor plate you can use the blade to a max and increase the durability of the blade.

Customer Service:

info@borox.com
Order: order@borox.com
+46155-264880

North America, Asia, England, Ireland:

Mats Haglund
mats.haglund@borox.com
+4670 58 39363

Central Europe:

Michael Schaal
michael.schaal@borox.com
+49 7032 794063

Eastern Europe, Russia, Kazakhstan, Ukraine, Turkey:

Attila Chovan
attila.chovan@borox.com
+421 948 727071

South Africa:

Len Enslin
len.enslin@borox.com
+27 71 538 6929

CONTENT

BOROX® Plow Blades	Page
Flat Blade & Slanting Blade 500HB	6-7
Flat Blade 550-600HB	8-9
Blade with curved end	10
Grader Blade	11
BX500 flat & BX500 with curved end	12-13
BX500R, BX550	14-15
Serrated Blade with sharp & flat profile	16-17
System 2000	18
Saw Tooth Bolt-on Edge/Cutting Edge	19
Flat Carbide Edge	20
Carbide Edge	21
Adapter Plate & Accessories	22-23
Accessories for mounting	24
Accessories for plows	25
Bolts & Nuts	26
Guide for choosing the right screw & nut	27

FLAT BLADE

Technical data
Thickness: 6-25 mm
Width: 200 mm
Length: 610-3650 mm
Hole spacing: see table below
BOROX® 500HB
Packing unit: 10pcs/package



BOROX® flat blade for both plowing and grading. If you need flat blades in other dimensions, please let us know. We will help you find the right blade for your plow!

For a simpler mounting and handling of the blade, we recommend mounting with adapter plate, wedge bolts and wedges.

Article	Dimension				
Plow Blades	Width mm	Thickness mm	Length mm	Holes	Hole spacing mm
1010091	200	6	915	3 x 2	305
1010122	200	6	1220	4 x 2	305
1010152	200	6	1525	5 x 2	305
1012061	200	10	610	2 x 2	305
1012003	200	10	660	3 x 2	305
1012069	200	10	692	3 x 2	305
1022069	200	10	692	4 x 2	340
1012079	200	10	792	3 x 2	305
1022079	200	10	792	4 x 2	340
1012004	200	10	780	3 x 2	305
1012085	200	10	855	3 x 2	305
1012091	200	10	915	3 x 2	305
1012099	200	10	991	4 x 2	305
1012122	200	10	1220	4 x 2	305
1012152	200	10	1525	5 x 2	305
1013061	200	12	610	2 x 2	305
1013069	200	12	692	2 x 2	305
1013079	200	12	792	3 x 2	305
1013091	200	12	915	3 x 2	305

Other sizes are offered on request

Article	Dimension				
Plow Blades	Width mm	Thickness mm	Length mm	Holes	Hole spacing mm
1013099	200	12	991	4 x 2	305
1013122	200	12	1220	4 x 2	305
1013152	200	12	1525	5 x 2	305
1033169	200	12	1690	6 x 4	290
1013183	200	12	1830	6 x 2	305
1033198	200	12	1980	7 x 4	290
1033244	200	12	2440	9 x 2	290
1033302	200	12	3020	11 x 4	290
1093350	200	12	3500	18 x 1	305
1033365	200	12	3650	13 x 2	290
1094002	200	15	1820	9 x 1	305
1094003	200	15	1828	13 x 1	305
1094004	200	15	1820	9 x 2	305
1094182	200	15	1820	9 x 1	305
1014122	200	16	1220	4 x 2	305
1014152	200	16	1525	5 x 2	305
1095009	200	20	1215	8 x 1	305
1086002	200	25	560	8 x 2	305
1086001	200	25	2440	8 x 2	305

Other sizes are offered on request

SLANTING BLADE

with accessories

Technical data
Thickness: 10-20 mm
Width: 200 mm
Length: 605-2590 mm
Hole spacing: see table below
BOROX® 500HB



In our assortment you will also find slanting blades for plowing with accessories.

The accessory is used for protection of the side cutter.

Article	Dimension					
Slanting blades	Width mm	Thickness mm	Length mm	Holes	Hole spacing mm	Notes
1072201	200	10	2010	7 x 2	290	slanting on both sides
1072259	200	10	2590	9 x 2	290	slanting on both sides
1073060	200	12	605	4 x 2	305	slanting corners
1074122	200	16	1220	4 x 2	305	slanting on one side
1075060	200	20	605	4 x 2	305	slanting corners
Accessory	Tjocklek mm		Notes			
1912001	10		for side cutter			

Other sizes are offered on request

FLAT BLADE 550HB

Technical data

Thickness: 15-20 mm

Width: 200-240 mm

Length: 792-1525 mm

Hole spacing: 305 mm

BOROX® 550HB



For tougher environments we offer flat blades in 550HB. BOROX® flat blades are mounted with bolts and nut or wedge bolt and wedges.

Article	Dimension			
	Width mm	Thickness mm	Length mm	Holes
550HB				
1014005	240	15	915	3 x 2
1014003	240	15	1220	4 x 2
1014004	240	15	1525	5 x 2
1015001	240	20	915	3 x 2
1015002	240	20	1220	4 x 2
1015003	240	20	1525	5 x 2
1027079	200	20	792	3 x 2
1027091	200	20	915	3 x 2
1027122	200	20	1220	4 x 2
1027152	200	20	1525	5 x 2

Other sizes are offered on request

FLAT BLADE 600HB

Technical data
Thickness: 10 mm
Width: 200 mm
Length: 692-1525 mm
Hole spacing: 305 mm
BOROX® 600HB
Packaging unit: 10pcs/package



For very tough and icy roads we offer flat blades in 600 Brinell.

Steel with hardness in 600 Brinell give up to 40% longer durability compared to traditional steel parts on the market. For easier handling and mounting we recommend adapter plates with wedge bolts and wedges.

Article	Dimension			
	Width mm	Thickness mm	Length mm	Holes
600HB				
1025069	200	10	692	3 x 2
1025079	200	10	792	3 x 2
1025091	200	10	915	3 x 2
1025099	200	10	991	4 x 2
1025122	200	10	1220	4 x 2
1025152	200	10	1525	5 x 2
1025080	200	10	800	3 x 2
1025090	200	10	900	3 x 2

Other sizes are offered on request

BLADES WITH CURVED ENDS

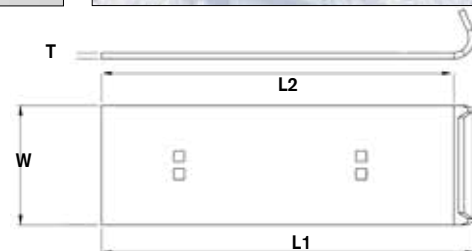
Technical data
Thickness: 10-12 mm
Width: 200 mm
Length: 625-1335 mm
Hole spacing: 305 mm
BOROX® 500HB



BOROX® blades with curved ends.

The curved end protects the outer side against strains from the pavement.

For a simpler handling and mounting we recommend adapter plates with wedge bolts and wedges.



Article	Dimension				
	Width (W) mm	Thickness (T) mm	Length (L1) mm	Length (L2) mm	Holes
1112625	200	10	625	-	2 x 2
1112010	200	10	699	-	3 x 2
1112074	200	10	740	692	3 x 2
1112012	200	10	789	-	3 x 2
1112014	200	10	819	-	3 x 2
1112084	200	10	840	792	3 x 2
1112013	200	10	859	-	3 x 2
1112096	200	10	965	915	3 x 2
1112104	200	10	1074	991	4 x 2
1112101	200	10	1020	-	4 x 2
1112110	200	10	1105	-	4 x 2
1112128	200	10	1280	1220	4 x 2
1112011	200	10	1335	-	4 x 2
1113074	200	12	740	692	3 x 2
1113084	200	12	840	792	3 x 2
1113096	200	12	965	915	3 x 2
1113104	200	12	1074	-	4 x 2
1113110	200	12	1105	-	4 x 2
1113128	200	12	1280	1220	4 x 2

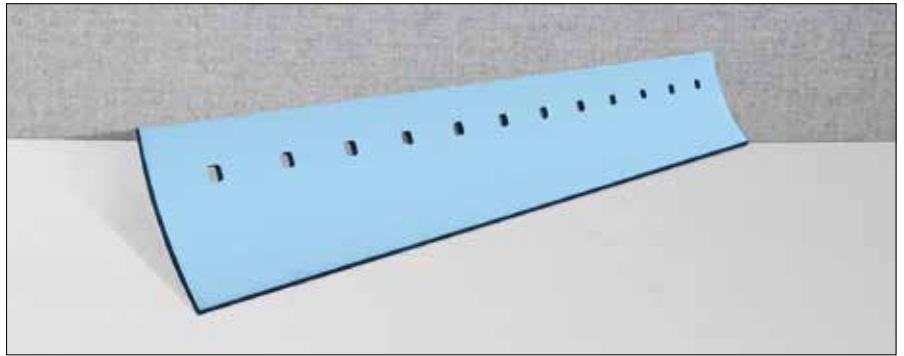
Other sizes are offered on request

GRADER BLADE

Technical data
Thickness: 19-35 mm
Width: 203-300 mm
Length: 1219-2438 mm
Hole spacing: 152,4 mm
Hole diameter Ø: see table below
BOROX® 500HB

BOROX® curved and straight blades for the construction and earthmoving industries.

Borox produces grader blades for most of the graders on the market.

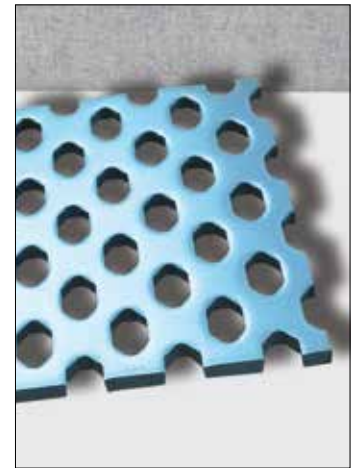
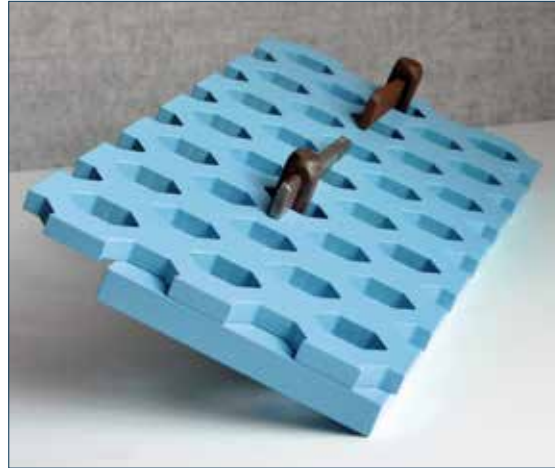


Artikel	Dimension					
	Grader blades	Width mm	Thickness mm	Length mm	Hole spacing Ø	Notes
4432152		203	19	1522	32	curved
4432001		203	19	1820	32	curved
4432182		203	19	1828	32	curved / 6 feet
4432121		203	19	1219	32	curved
4432213		203	19	2134	32	curved / 7 feet
4432004		203	19	2134	36	curved
4432438		203	19	2438	32	curved

Other sizes are offered on request

BX500

Technical data
Thickness: 10-15 mm
Width: 180-300 mm
Length: 485-2030 mm
Hole spacing: see table below
BOROX® 500HB
Packing unit: 10pcs/package



BOROX® BX500 self-sharpening blades which helps you improves de-icing operation.

The BOROX® BX500 leaves a rough road surface with grooves, which retains salt and sand in an efficient manner.

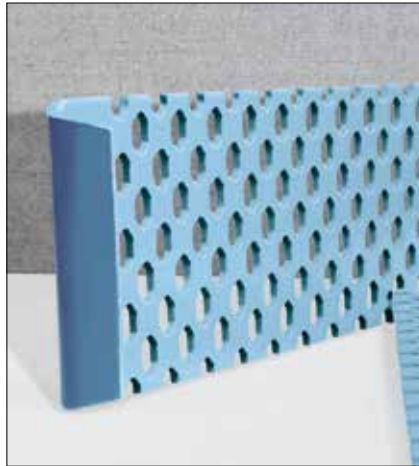
Article	Dimension			
	Width mm	Thickness mm	Length mm	Hole spacing mm
BX500				
1257048	180	10	485	305
1257005	180	10	580	305
1257002	180	10	660	305
1257069	180	10	692	305
1257004	180	10	780	305
1257079	180	10	792	305
1257085	180	10	855	305
1257091	180	10	915	305
1257122	180	10	1220	305
1257152	180	10	1525	305
1258069	240	10	692	305
1258079	240	10	792	305
1258091	240	10	915	305
1258099	240	10	991	305
1258122	240	10	1220	305
1258152	240	10	1525	305
1258001	240	10	1820	305
1259091	300	10	915	305
1259122	300	10	1220	305
1259152	300	10	1525	305
1259001	300	10	2030	140

Other sizes are offered on request

BX500 WITH CURVED ENDS

Technical data

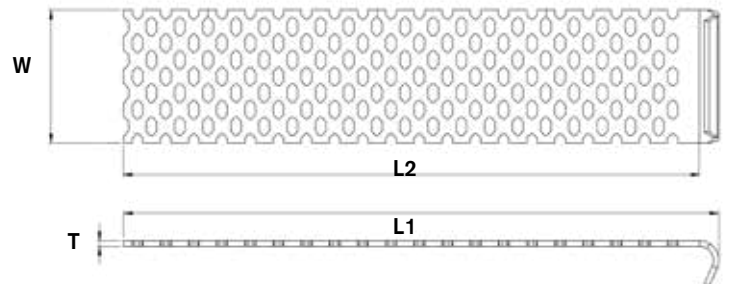
Thickness: 10 mm
Width: 180-240 mm
Length: 850-1280 mm
Hole spacing: 305 mm
BOROX® 500HB



BOROX® BX500 with curved ends is a perfect general steel for winter roads with compact snow and ice.

The curved end protects the outer side of the plow blade and gives a more softer drive against the side walk.

For a more simpler handling we recommend mounting with adapter plates and wedges/wedge bolts.

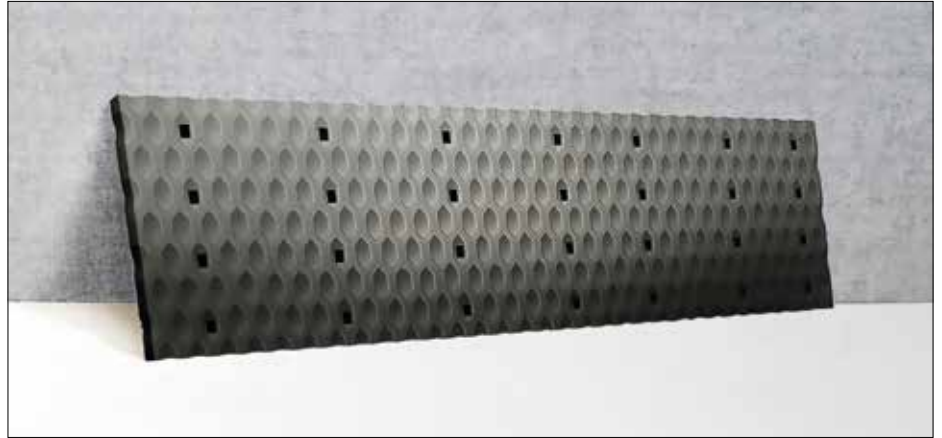


Article	Dimension			
	Width W mm	Thickness T mm	Length L1 mm	Length L2 mm
BX500 with curved ends				
1157085	180	10	850	792
1157098	180	10	980	915
1157128	180	10	1280	1220
1158085	240	10	850	792
1158098	240	10	980	915
1158104	240	10	1074	991
1158128	240	10	1280	1220

Other sizes are offered on request

BX500R

Technical data
Thickness: 10 mm
Width: 240 mm
Length: 692-1525 mm
Hole spacing: 305 mm
BOROX® 500HB



BOROX® BX500R with its lining of rubber prevents snow and ice from getting through the perforated holes. At the same time it gives you the opportunity to work more quietly.

Article	Dimension		
	Width mm	Thickness mm	Length mm
BX500R			
2658069	240	10	692
2658079	240	10	792
2658091	240	10	915
2658122	240	10	1220
2658152	240	10	1525

BX550

Technical data

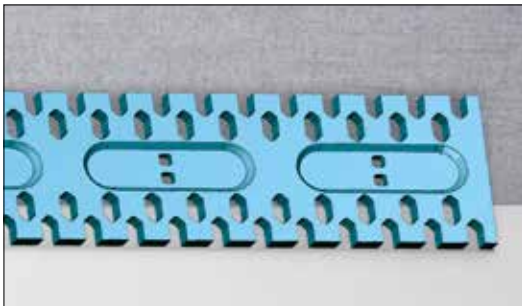
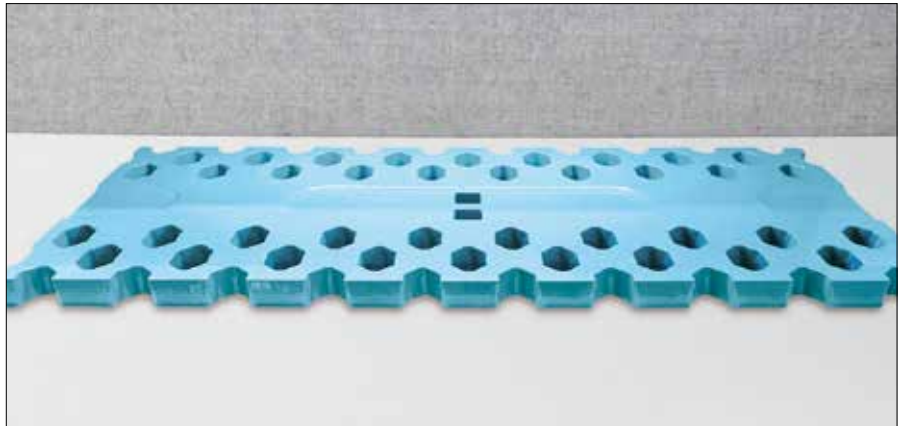
Thickness: 15-20 mm

Width: 240 mm

Length: 792-1525 mm

Hole spacing: 305 mm

BOROX® 500HB



If you demand high durability for really tough conditions, we recommend BOROX® BX550, perforated blade with hardness 550 Brinell.

With BX550, you drive longer between replacements. It is mounted with both screws and nuts as well as with wedges and wedge bolts. Plow blades in 550 Brinell are also available as flat edges on page 8.

By using the adapter plate for mounting the BX550 you will simplify handling the blade and also improve the durability of the blade. For more information see page 24.



Article	Dimension		
	Width mm	Thickness mm	Längd mm
550HB			
1258003	240	15	792
1258004	240	15	915
1258005	240	15	1220
1258006	240	15	1525
1258502	240	20	915
1258500	240	20	1220
1258501	240	20	1525

Other sizes are offered on request

SERRATED BLADE SHARP PROFILE

Technical data

Thickness: 12 mm

Width: 193-200 mm

Length: 915-1525 mm

Tooth spacing: 16mm, 30 mm

Hole spacing: see table below

BOROX® 500HB

Packaging unit: 10pcs/package



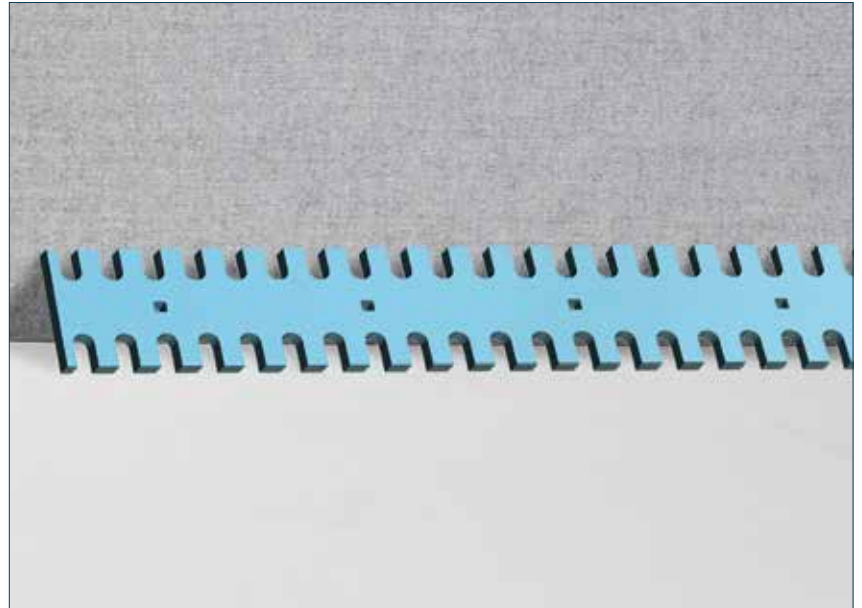
For tough snow and ice, such as icy roadways, we offer BOROX® serrated blades. It gives a good road holding surface.

The serrated blades are available in two variants: with sharp profiles and with flat profiles. Sharp profiles are offered both as curved blades and flat blades. Flat profiles are available only as flat blades, see next page.

Article	Dimension					
Curved	Width mm	Thickness mm	Length mm	Tooth spacing mm	Holes	Hole spacing mm
1213091	193	12	915	30	3 x 2	305
1213122	193	12	1220	30	4 x 2	305
1213152	193	12	1525	30	5 x 2	305
1213001	193	12	1820	30	9 x 2	280
1217091	193	12	915	16	3 x 2	305
1217122	193	12	1220	16	4 x 2	305
1217152	193	12	1525	16	5 x 2	305
Flat	Width mm	Thickness mm	Length mm	Tooth spacing mm	Holes	Hole spacing mm
1253091	200	12	915	30	3 x 2	305
1253122	200	12	1220	30	4 x 2	305
1253152	200	12	1525	30	5 x 2	305
1254122	200	12	1220	16	4 x 2	305
1254152	200	12	1525	16	5 x 2	305

Other sizes are offered on request

SERRATED BLADE FLAT PROFILE



Technical data

Thickness: 12 mm

Width: 193-200 mm

Length: 792-1525 mm

Tooth spacing: 16mm, 30 mm

Hole spacing: see table below

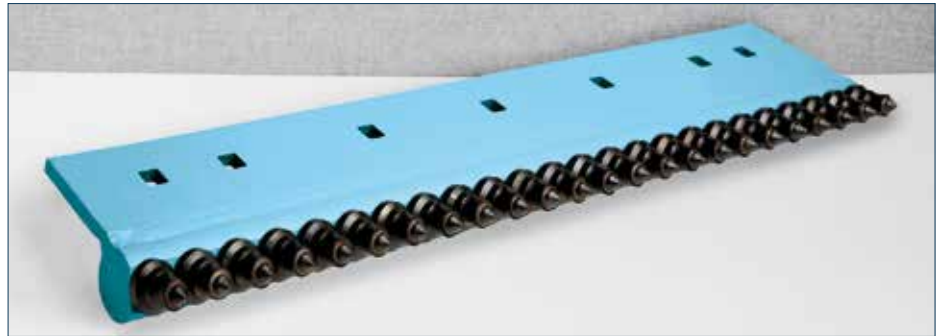
BOROX® 500HB

Packaging unit: 10pcs/package

Article	Dimension						
	Flat	Width mm	Thickness mm	Length mm	Tooth spacing mm	Holes	Hole spacing mm
1223061		200	12	610	30	2 x 2	305
1223079		200	12	792	30	3 x 2	305
1223091		200	12	915	30	3 x 2	305
1223122		200	12	1220	30	4 x 2	305
1223152		200	12	1525	30	5 x 2	305
1223169		200	12	1690	30	6 x 1	290
1223198		200	12	1980	30	7 x 1	290
1223244		200	12	2440	30	9 x 1	290
1227079		200	12	792	16	3 x 2	305
1227091		200	12	915	16	3 x 2	305
1227122		200	12	1220	16	4 x 2	305
1227152		200	12	1525	16	5 x 2	305
1223302		200	12	3020	30	11x1	290

Other sizes are offered on request.

SYSTEM 2000



Technical data (holder)
Angle: 25°, 37°, 45°
Length: 610-1220 mm
Diameter mounting hole: 18,5 mm
Diameter pin hole: 19,75 mm
BOROX® 500HB
*fitted for attachment to trucks

With the BOROX® system 2000 you do not need too much pressure on the ground and the carbide pins give you the a longer durability.

System 2000 is a unique product, where the pins rotate easily to collect the material where the material is grounded between the pins.

Carbide pins work their way down in to the material with a small contact surface and this makes the graer easy to maneuver.

In the BOROX® standard assortment we offer holder with different angles; 25, 37 and 45 degrees.

Article	Dimension							
	Holder S-2000		Angle	Width mm	Thickness mm	Length mm	Mounting holes	Pin holes
1601061	610 mm (2 fot)	25°	25	610	129	12	3	15
1601091	915 mm (3 fot)	25°	25	915	129	12	7	24
1601122	1220 mm (4 fot)	25°	25	1220	129	12	11	32
1602091	915 mm (3 fot)	37°	37	915	129	12	7	23
1602122	1220 mm (4 fot)	37°	37	1220	129	12	11	32
1600061*	610 mm (2 fot)	45°	45	610	125	12	5	15
1600091*	915 mm (3 fot)	45°	45	915	125	12	7	24
1600122*	1220 mm (4 fot)	45°	45	1220	129	12	11	32

Technical data (pins)
Diameter mounting hole: 18,5 mm
Diameter pin hole: 19,75 mm
Packaging unit: 50pcs/package



Article		
Carbide pins		Notes
1603004	sharp	with collar & washer
1603007	sharp	with collar & washer
1603006	blunt	with collar & washer

SAW TOOTH BOLT ON EDGE & SEGMENTS

Technical data

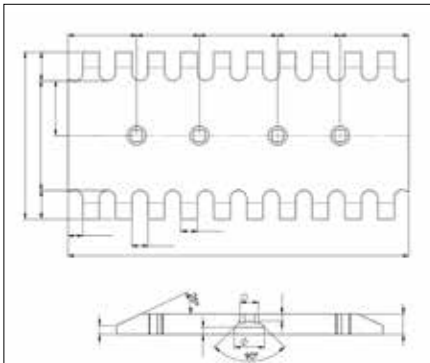
Thickness: 16-70 mm

Width: 200-850 mm

Length: 600-900 mm

BOROX® 500HB

BOROX® 550HB is offered on request



In BOROX® assortment we offer saw tooth bolt-on edges and segments. The edges are reversible and mounted in sections. This is why BOROX® edges can be used to its max before it needs to be replaced.

To order BOROX® saw tooth bolt-on and segments we need the following information from you:

Thickness mm	Amount holes
Width mm	Hole dimension
Length mm	Quantity
Hole spacing mm	Tooth spacing mm
Other specifications	

We will then return with the drawing and calculation, all you need to do is to approve and order!

Customer Service:

info@borox.com
Order: order@borox.com
+46155-264880

North America, Asia, England, Ireland:

Mats Haglund
mats.haglund@borox.com
+4670 58 39363

Central Europe:

Michael Schaal
michael.schaal@borox.com
+49 7032 794063

Eastern Europe, Russia, Kazakhstan, Ukraine, Turkey:

Attila Chovan
attila.chovan@borox.com
+421 948 727071

South Africa:

Len Enslin
len.enslin@borox.com
+27 71 538 6929



FLAT CARBIDE EDGES

Technical data

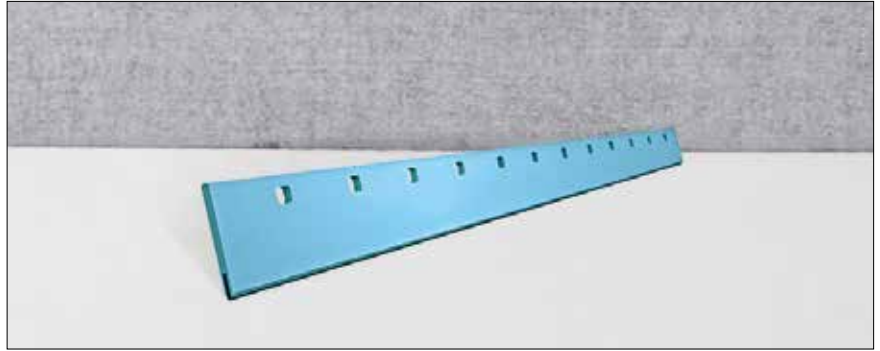
Thickness: 19 mm

Width: 130 mm

Length: 610-1220 mm

Hole spacing: 305 mm

BOROX® 500HB



To give the plow blade a longer life span we offer you a blade with reinforced carbide in the edges.

The multi-purpose steel for all ploughing and grading.

Article	Dimension				
Flat carbide edges	Width mm	Thickness mm	Length mm	Notes	
1604060	130	19	610	(2 fot)	
1604080	130	19	792		
1604091	130	19	915	(3 fot)	
1604122	130	19	1220	(4 fot)	

Other sizes are offered on request.

CARBIDE EDGES

Technical data

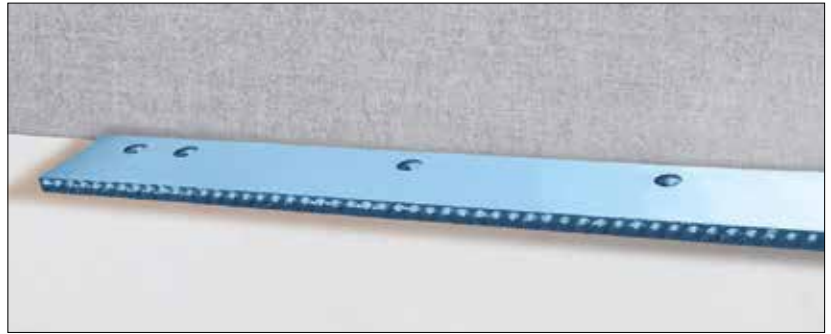
Thickness: 22 mm

Width: 125 mm

Length: 792-1220 mm

Hole spacing: 305 mm

BOROX® 500HB



The carbide edges prolong the durability of the blade.

Article	Dimension			
Carbide edges	Bredd mm	Tjocklek mm	Längd mm	Anmärkning
1605079	125	22	792	
1605091	125	22	915	(3 fot)
1605122	125	22	1220	(4 fot)

Other sizes are offered on request.

ADAPTER PLATE

Technical data

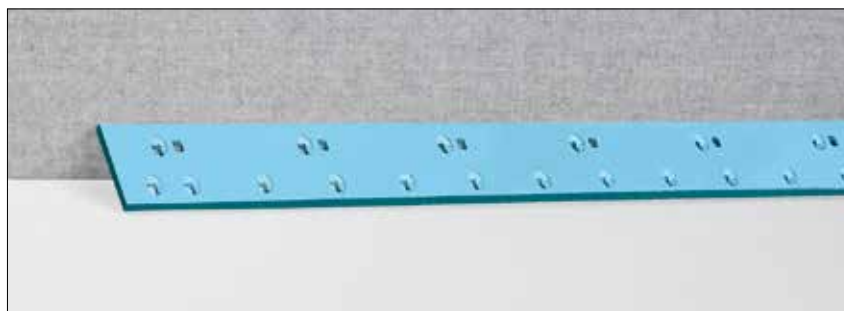
Thickness: 15-20 mm

Width: 130-150 mm

Length: 1817-2427 mm

Hole spacing: 305 mm / 6"

BOROX® 500HB



Thanks to the adapter plate you can quickly and easily change new blades and/or rotate the current blade - all you need is a powerful hammer.

BOROX® adapter plate is mounted onto the moldboard and the blades are secured with wedges and wedge bolts. See the instruction video on www.borox.com/support.

Article	Dimension				Notes
Adapter plate	Width mm	Thickness mm	Length mm	Hole spacing mm	
1402181	130	15	1817	305	countersunk (wedge bolt 47)
1402212	130	15	2122	305	countersunk (wedge bolt 47)
1403181	130	15	1817	305	(wedge bolt 53)
1403212	130	15	2122	305	(wedge bolt 53)
1405181	140	16	1817	305	CAT 14 G (3/4" mounting hole) slide plate
1405212	140	16	2122	305	CAT 14 G (3/4" mounting hole) slide plate
1415181	140	16	1817	305	CAT 14 G (16 mm mounting hole) slide plate
1415212	140	16	2122	305	CAT 14 G (16 mm mounting hole) slide plate
1404000	150	20	1817	6"	För 3/4" hole
1404001	150	20	2122	6"	För 3/4" hole
1404002	150	20	2427	6"	För 3/4" hole

ACCESSORY KIT

To simplify the choice of bolts, nuts and other accessories we have created ready made BOROX® accessory kits. Each kit suits two adapter plates.

Article		Content		
Kit	Article	Description	Amount	suits adapter plate
1880002		Countersunk		1402181, 1402212
	1850070	Support plate 70	14	
	1831037	Bolt FH M16x37	14	
	1842001	Trilock nut M16	14	
	1831065	Bolt FH M16x65	30	
	1831090	Bolt FH M16x90	4	
	1841001	Flange nut M16	34	
1880003		Not countersunk		1403181, 1403212
	1850080	Support plate 80	14	
	1860001	Insex key	1	
	1832030	Insex bolt M12x30	14	
	1840001	Nut M12	14	
	1831065	Bolt FH M16x65	30	
	1831090	Bolt FH M16x90	4	
	1841001	Flange nut M16	34	
1880006		CAT 14 G (3/4" fästhål)		1405181, 1405212
	1850865	Support plate 80.65	14	
	1831037	Bolt FH M16x37	14	
	1841005	Flange nut, phosphate=968904 M16x37	14	
	1821163	Bolt 3/4"x63	30	
	1840101	Nut 3/4"	30	
1880007		CAT 14 G (16 mm fästhål)		1415181, 1415212
	1850865	Support plate 80.65	14	
	1831037	Bolt FH M16x37	14	
	1841005	Flange nut, phosphate=968904 M16x37	14	
	1831065	Bolt M16x65	30	
	1840002	Nut M16	30	

ACCESSORIES FOR MOUNTING



Technical data

BOROX® 500HB

Packaging unit 25pcs/package

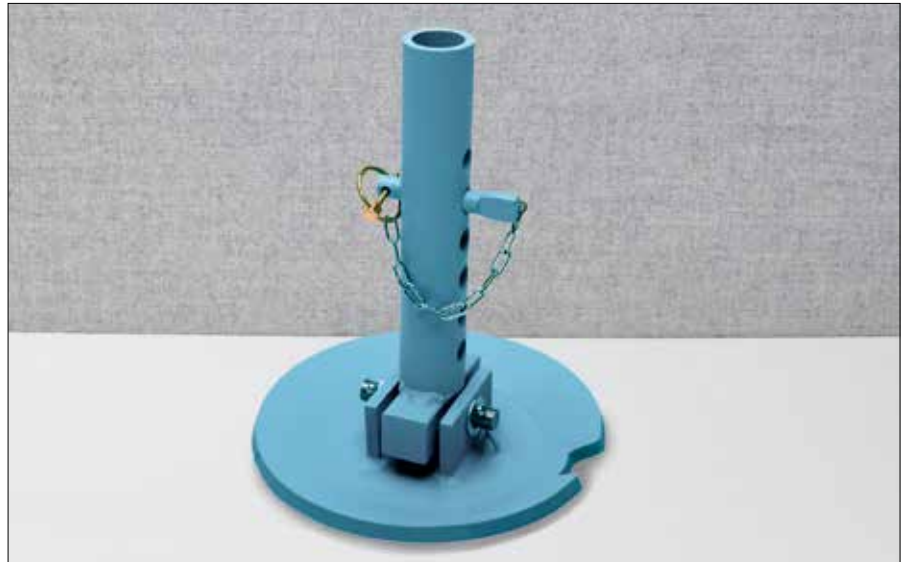
Simplify mounting by using wedges, wedge bolts and support plates.

The mounting tool simplifies the removal of the wedges. It increases the striking area and protects the wedge tip. In the BOROX® assortment we also offer support plates for mounting and accessory part for repair.

Article		Dimension			
Wedges		Width mm	Thickness mm	Length mm	Notes
1820004	20,5 Wedge	13	6	125	(10-13 mm blade)
1820005	24,5 Wedge	17	6	125	(6-9 mm blade)
1820006	26,5 Wedge	14	6	125	(6 mm blade)
1820007	18,5-22,5 Expander wedge	11	5	125	(8-13 mm blade)
Wedge bolts		Length mm	Notes		
1810001	Wedge bolt 16 x 47	47	standard		
1810002	Wedge bolt 16 x 53	53	standard		
1810003	Wedge bolt 16 x 53	53	special, longer track (6-13 mm blade)		
1810004	Wedge bolt 16 x 65	65	standard		
Mounting tool		Notes			
1861024		with protection			
Accessory part		Width mm	Thickness mm	Length mm	Hole spacing mm
1408200		80	12	2000	305
1409200		80	12	2000	290
Support plate		Notes			
1850070		Nr 70		flat	
1850080		Nr 80		curved	
1850865		Nr 80.65		slide plate	

ACCESSORIES FOR PLOWS

In the BOROX® assortment we offer plate holders and legs for most of the plows on the market.



Article		Dimension				
Plates	Diameter mm	Thickness mm	Distance between the ears mm	Hole diameter ears mm	Including	
1500001	220	12	65	16,5	mounting ears	
1530001	270	16	65	23	mounting ears	
1530002	270	16	66	25,3	mounting ears	
1530003	270	16	50	25,3	mounting ears	
1530004	270	16	48	16,5	mounting ears, axle, legs	
1530005	270	16	48	16,5	mounting ears	
1530006	270	16	56,5	16	mounting ears	
1540001	300	16	75	21	mounting ears	
1540004	300	16	66	25,3	mounting ears	
1540006	300	16	65	23	mounting ears, axle, legs	
1540007	300	16	65	23	mounting ears	
1530000	270	16	-	-	-	
1540000	300	16	-	-	-	
1555000	325	35	120	M16	threaded holes	
Plate holders			Notes			
1570001			for plate (including axle), for plate holder CC120 mm D18 mm			
1570020			complete kit with 1570021 & 1570014			
1570021			holder with screw			
1570014			holder with ball			
1570017			screw M16x40, including nut			
Legs & axles			Notes			
1590104	Leg					
1590106	Leg					
1590002	Axle					
1590003	Axle					
1590004	Axle		plate holders 1570001, 1540001			
1590005	Axle					
1590006	Axle		with chain			

BOLTS & NUTS



Technical data

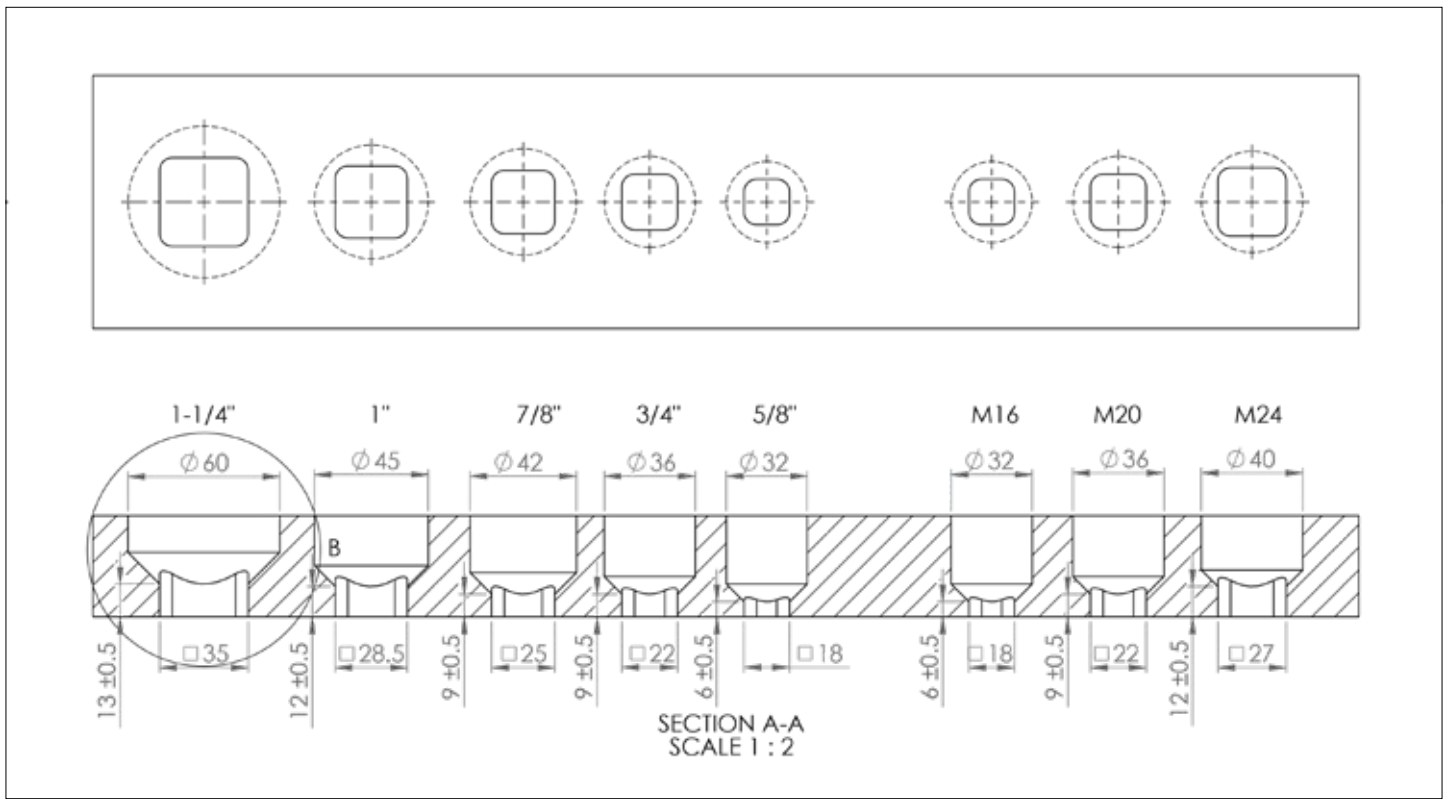
Packaging unit: 25pcs/package

Borox delivers a wide range of high quality bolt and nuts.

Article	Dimension	Quality classification	Notes
Bolt			
1835075	M12x75	8.8	for 1087227
1830045	KH M 16x45	12.9	
1830055	KH M 16x55	12.9	
1830070	KH M 16x70	12.9	
1830090	KH M 16x90	12.9	
1831037	FH M 16x37	10.9	for support plate 70, flat
1831055	FH M 16x55	10.9	for plate 1550000
1831065	FH M 16x65	10.9	
1831080	FH M 16x80	10.9	
1832030	MFS 12x30	10.9	for support plate 80, curved
1832040	MFS 12x40	10.9	
1833040	MFS 16x40	10.9	
1831090	MFS 16x90	10.9	
Nuts			
1841001	M16	8.8	flange nut nyloc
1841003	M16	8.8	flange nut low
1841005	M16	10.9	flange nut rifled
1842001	M16	8.8	trilock
1840001	M12	8.8	

GUIDE FOR BOLTS & NUTS

Use our guide to order the right bolt and nut.



Please let us know if you have any questions!



Borox International AB
Oxelösund, Sweden
Telefon: +46 (0) 155 26 48 80
Telefax: +46 (0) 155 26 48 99
www.borox.com